



Welcome to our **Hill Top Close** development!

Nestled within the rural village of Whittington and tucked away to the north of Penybryn Avenue, we are building 24 new affordable homes that are available for both affordable rent and shared ownership tenures. The site is due to complete in August 2023.



Tenure arrangement

Our development will provide 8 Shared Ownership (SO) and 16 Affordable Rent (AR) properties available in the following plot arrangements:

Plot No	Property Type	No of beds	Tenure	Gross Internal floor area (m2)	Parking provision
1	Bungalow	1	AR	50	1
2	Bungalow	2	AR	62	2
3	House	2	SO	70	2
4	House	2	AR	70	2
5	House	2	AR	70	2
6	House	2	AR	70	2
7	House	2	SO	70	2
8	House	2	SO	70	2
9	Bungalow	2	AR	62	2
10	Bungalow	2	AR	62	2
11	Bungalow	2	AR	62	2
12	Bungalow	2	AR	62	2
13	Bungalow	1	SO	50	1
14	Bungalow	2	AR	62	2
15	House	2	AR	70	2
16	House	2	AR	70	2
17	House	2	AR	70	2
18	House	2	AR	70	2
19	House	3	SO	85	2
20	House	3	SO	85	2
21	House	3	SO	85	2
22	House	3	SO	85	2
23	Bungalow	1	AR	50	1
24	Bungalow	1	AR	50	1

Property Key Features

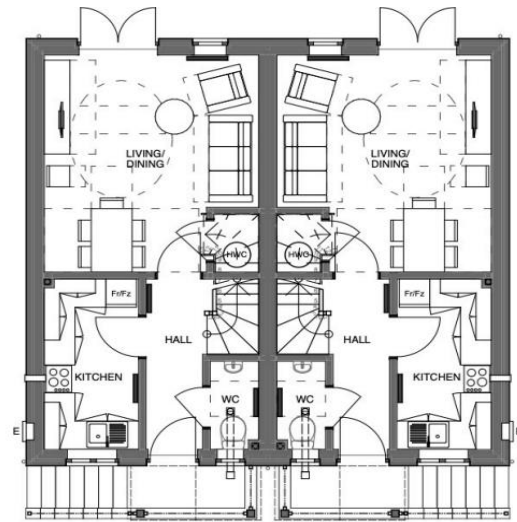
All of our new homes will come with the following key features as standard:

- NHBC 12 year warranty
- Private parking
- Efficient gas central heating
- Contemporary kitchen and bathroom with flooring provided
- Downstairs WC with flooring provided
- Enclosed rear garden
- Rear balconies to select plots

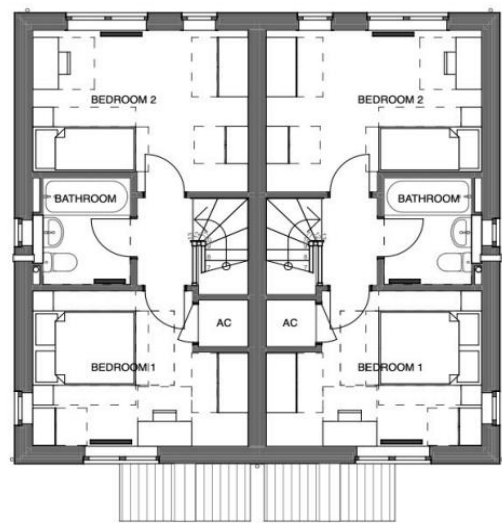
In addition to the above, our Shared Ownership properties also include A-rated, built-in stainless steel single oven, ceramic hob and chimney hood.

Proposed elevations and floor plans

House Type B – 2 Bedroom House

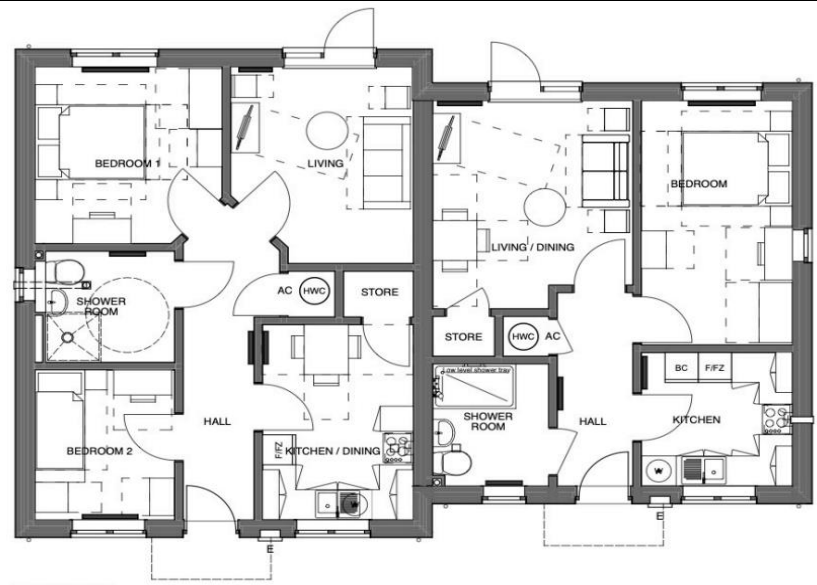


GROUND FLOOR PLAN
Type B
TWO BEDROOM 70.4sqm



FIRST FLOOR PLAN

House Type C & D – 1 and 2 Bed Bungalow



FLOOR PLAN
Type D & C
 TWO BEDROOM 62sqm
 &
 ONE BEDROOM 50.1sqm

House Type E – 3 Bedroom House



REAR ELEVATION



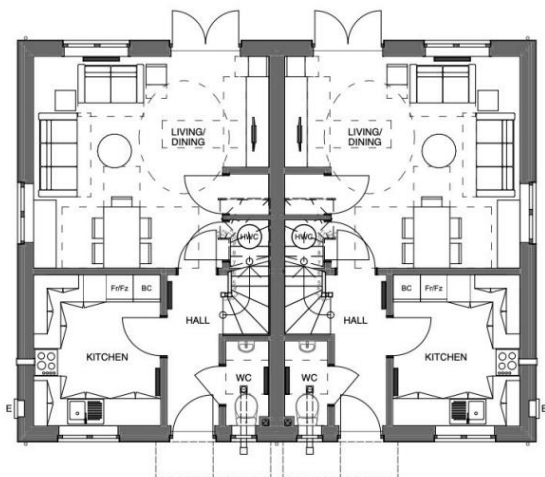
SIDE ELEVATION



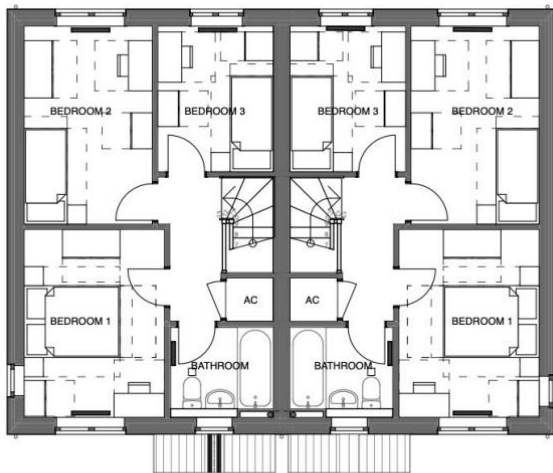
FRONT ELEVATION



SIDE ELEVATION



GROUND FLOOR PLAN
Type E
THREE BEDROOM 85sqm



FIRST FLOOR PLAN

Applying for your new home

If you are interested in one of the Affordable Rent properties, please register on [Shropshire HomePoint](#), which is Shropshire's Choice Based Lettings System. You can then bid for your chosen property of interest once it becomes available.

For more information on our Shared Ownership properties or to register your interest, please contact Mike Read on 01743 210212 or michael.read@starhousing.org.uk